

Judd Solutions

Development, Mentoring and Training



706 – Step by Step: Making Enterprise JavaBeans with J2EE Standard Tools

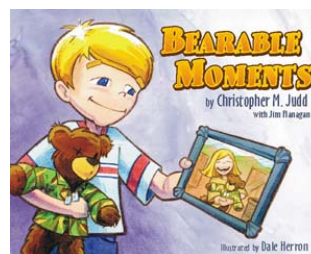
Christopher M. Judd
President/Consultant
Judd Solutions, LLC



Christopher M. Judd



- President/Consultant of Judd Solutions
- Central Ohio Java User Group (COJUG) coordinator



Judd Solutions



Other Sessions of Interest



- WTP
 - T-4. Develop Better J2EE Applications with the Web Tools Platform (Wed 8:45)
 - 101. Quick Tour of the Eclipse Web Tools Platform (Thu 8:30)
 - 107. Leveraging JSF Components (Thu 8:30)
 - 201. How to Build Java Web Applications with the Web Tools Platform (Thu 10:30)
 - 301. Facing JavaServer Faces Development with JSF Tools (Thu 1:15)
 - 401. Consuming and Producing Web Services with Web Tools (Thu 3:15)
 - 501. Developing Java Web Services with the Web Tools Platform (Fri 8:45)
 - 504. Developing Rich Applications with JSF and AJAX (Fri 8:45)
 - 701. Building Applications with the Java Persistence API and Dali (Fri 1:45)
 - 706. Step by Step: Making Enterprise JavaBeans with J2EE Standard Tools (Fri 1:45)
 - 801. How to Use and Extend Eclipse's XML and Schema Tools (Fri 3:45)
- Other
 - T-7. Callisto Boot Camp: Ten Projects. One Day (Wed 8:45)
 - 107. Leveraging JSF Components (Thu 8:30)
 - 202. Web 2.0 the Eclipse Way with the Rich AJAX Platform (Thu 10:30)
 - 204. Interacting with Relational Databases (Thu 10:30)

Judd Solutions



Agenda



- EJB Overview
- WTP Overview
- JST Overview
- Workspace Setup
- Session Bean
- Session Bean Client
- Packaging and Deployment
- Conclusion

Judd Solutions



Enterprise JavaBean Development is HARD!!!

Judd Solutions



EJB Types



- Session – Server-side business logic
 - Stateful
 - Stateless
- Entity – Persistable business objects
 - CMP
 - BMP
- Message-Driven – Consumers of JMS messages

Judd Solutions



- Session
 - Remote Interface
 - Home Interface
 - Local Interface
 - Local Home Interface
 - Bean Class
 - EJB Deployment Descriptor
 - App Server Specific EJB Deployment Descriptor



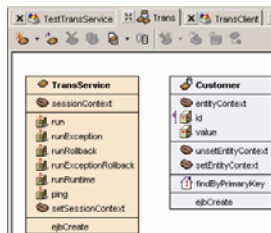
- Entity
 - Remote Interface
 - Home Interface
 - Local Interface
 - Local Home Interface
 - Bean Class
 - EJB Deployment Descriptor
 - App Server Specific EJB Deployment Descriptor
 - App Server Specific CMP Deployment Descriptor



- Message-Driven Bean
 - Bean Class
 - EJB Deployment Descriptor
 - App Server Specific EJB Deployment Descriptor



- Code classes and interfaces by hand
- Diagrams



- Annotations

```
/**
 * A generated session bean
 * @ejb.bean name="TransService"
 *           description="A session bean named TransService"
 *           display-name="TransService"
 *           jndi-name="TransService"
 *           type="Stateless"
 *           transaction-type="Container"
 */
public abstract class TransServiceBean implements
    javax.ejb.SessionBean {
```



Agenda



- EJB Overview
- WTP Overview
- JST Overview
- Workspace Setup
- Session Bean
- Session Bean Client
- Packaging and Deployment
- Conclusion

Judd Solutions



Web Tools Platform Project (WTP)



- Top Level Eclipse Project
- www.eclipse.com/webtools/
- Included in Callisto release
- Development tools for web and JEE development
 - No runtime dependencies
 - Vendor extensible
- Subprojects
 - Web Standard Tools (WST)
 - J2EE Standard Tools (JST)
 - JavaServer Faces Tools (JSF)
- Current version 1.5
- Dependencies
 - Eclipse 3.2
 - Eclipse Modeling Framework (EMF) 2.2.0
 - Graphic Editor Framework (GEF) 3.2
 - Java EMF Model (JEM) 1.2

Judd Solutions



WTP Subprojects

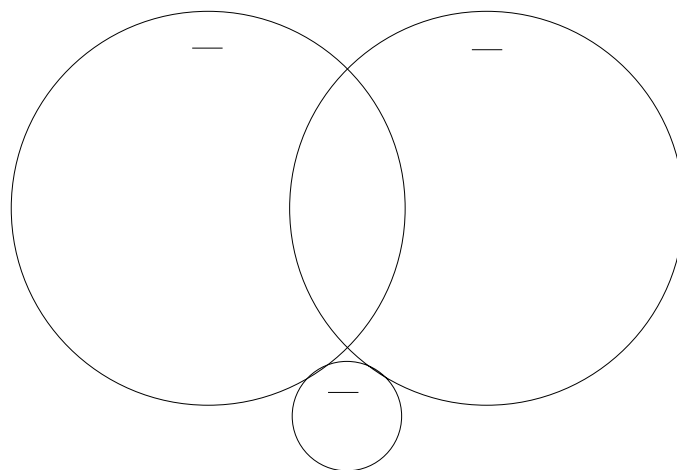


- Web Standard Tools (WST)
 - Web artifacts
 - Defined by open standards bodies
- J2EE Standard Tools (JST)
 - J2EE components
 - Java Community Process (JCP)
 - Depends on WST
- JavaServer Faces Tools (JSF)

Judd Solutions



WTP Scope



Judd Solutions



WTP Installation Options



- Callisto
- All-in-one
 - Eclipse 3.2
 - Eclipse Modeling Framework (EMF) 2.2.0
 - Graphic Editor Framework (GEF) 3.2
 - Java EMF Model (JEM) 1.2
- Update Manager
 - Eclipse.org update site
- Piecemeal

* JSF is a separate install

Judd Solutions



Agenda



- EJB Overview
- WTP Overview
- JST Overview
- Workspace Setup
- Session Bean
- Session Bean Client
- Packaging and Deployment
- Conclusion

Judd Solutions



JST Scope



WTP 1.5 focuses on J2EE 1.4 support

- EJB 2.1
- Servlet 2.4
- JSP 2.0
- JMS 1.1
- JTA 1.0
- JavaMail 1.3
- JAF 1.0
- JAXP 1.2
- Connector 1.5
- Web Services 1.1
- JAX-RPC 1.1
- SAAJ 1.2
- JAXR 1.0
- J2EE Management 1.0
- JMX 1.2
- J2EE Deployment 1.1
- JACC 1.0

Judd Solutions



JST Future Scope (2.0)



- EJB 3.0 (Dali)
- JavaServer Faces (JSF)

Judd Solutions



JST Annotations



- Plug-able annotations platform
- XDoclet
 - Open Source
 - Attribute Oriented Programming (AOP) framework
 - xdoclet.sourceforge.net
- Generates
 - Bean Interfaces
 - Bean Util classes
 - EJB Deployment Descriptors
 - Web Deployment Descriptors

Judd Solutions



JST Projects



- Projects Types
 - Enterprise Application Project (ear)
 - EJB Project (ejb-jar)
 - Dynamic Web Project (war)
 - Application Client Project (jar)
 - Connector Project (rar)

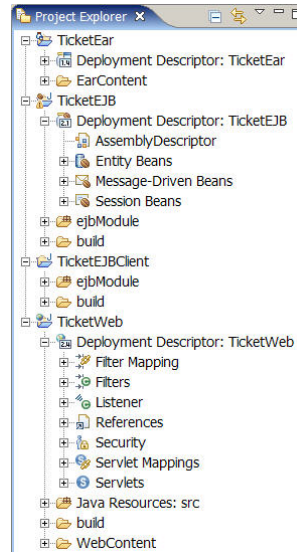
Judd Solutions



JST Projects



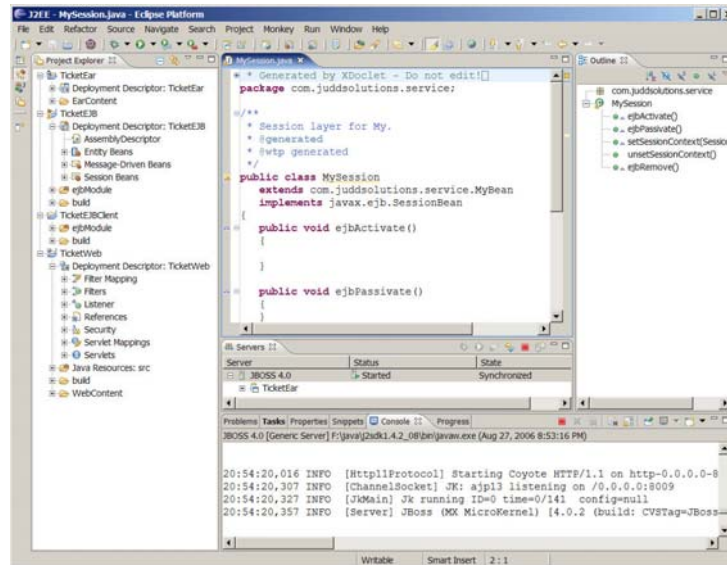
- Project Layouts
 - Project per module



Judd Solutions



J2EE Perspective



Judd Solutions



Agenda



- EJB Overview
- WTP Overview
- JST Overview
- **Workspace Setup**
- Session Bean
- Session Bean Client
- Packaging and Deployment
- Conclusion

Judd Solutions



Workspace Setup



- Configure application server runtime
- Configure J2EE Annotations

Judd Solutions



Supported Servers



- Apache Tomcat
 - 3.2
 - 4.0
 - 4.1
 - 5.0
 - 5.5
- Apache Geronimo 1.0
- BEA WebLogic 8.1 & 9.0
- IBM WebSphere 6.0.x
- JBoss 3.2.x & 4.0.x
- JOnAS 4.x
- Oracle OC4J Standalone 10.1.3

Judd Solutions



Defining Server

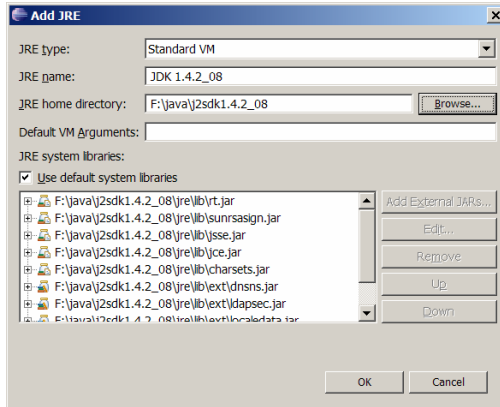


1. Configure server appropriate JDK
2. Configure server runtime
3. Test server

Judd Solutions

Configure JDK

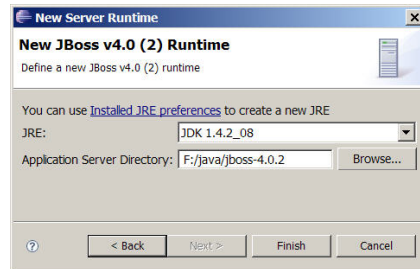
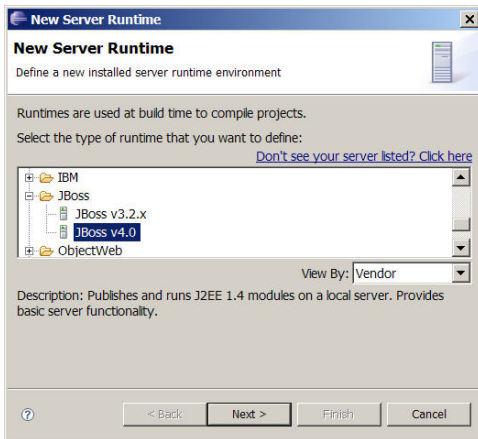
- Window > Preferences > Java > Installed JREs



Judd Solutions

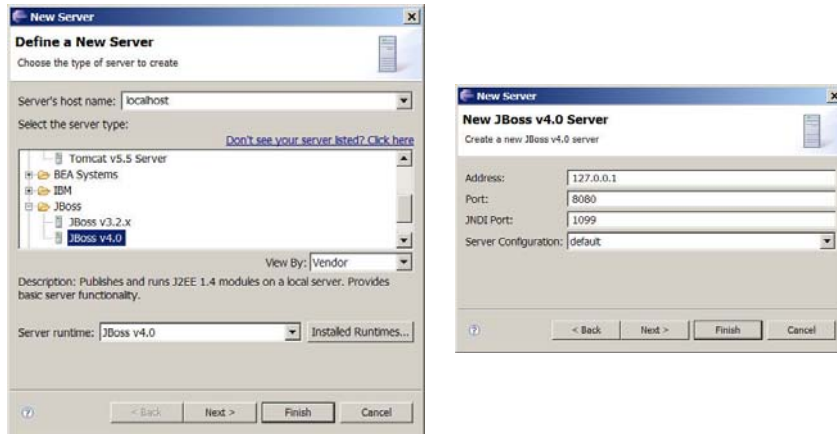
Configure Server Runtime

- Window > Preferences > Server > Installed Runtimes

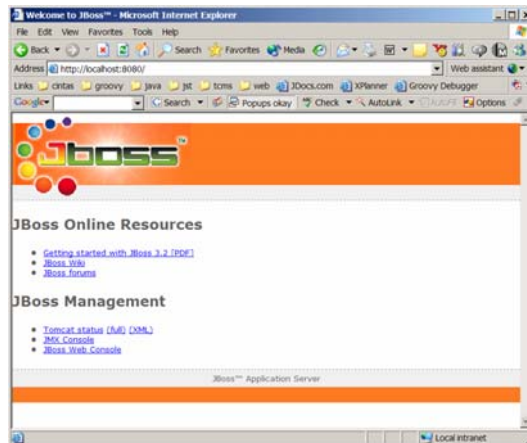


Judd Solutions

- Use Server View in J2EE Perspective
1. Add server (New > Server)



2. Start server
3. Verify server is up

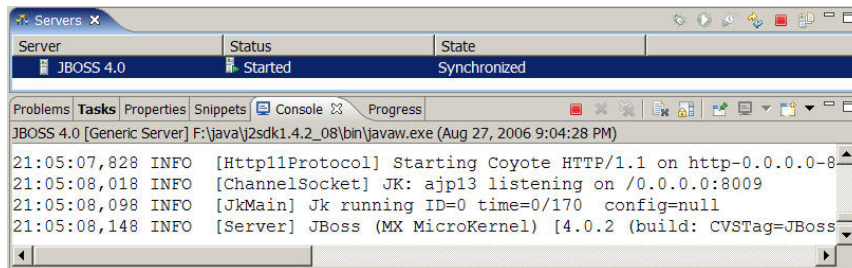




Server View Usability Tip



- Move Server View above Console view
 - Easier application server startup
 - Easier deployment



Judd Solutions




Workspace Setup




- Configure application server
- Configure J2EE Annotations

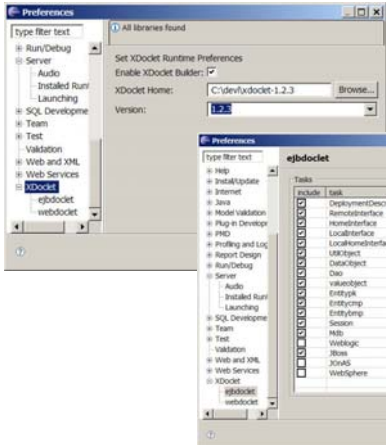

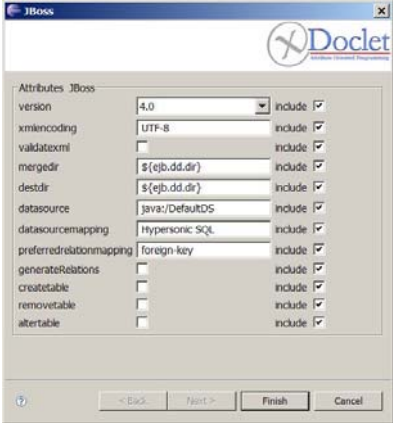
Judd Solutions





XDoclet Configurations




- Location
- App server & version






Agenda



- EJB Overview
- WTP Overview
- JST Overview
- Workspace Setup
- Session Bean
- Session Bean Client
- Packaging and Deployment
- Conclusion





Create Session Bean



1. Create EJB, EJB Client & EAR Projects
2. Run XDoclet Enterprise JavaBean Wizard
3. Add XDoclet ejb annotations
4. Add XDoclet app server specific annotations
5. Deploy

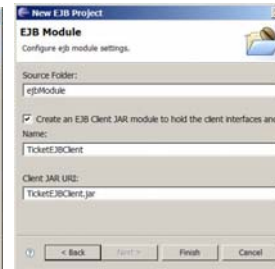
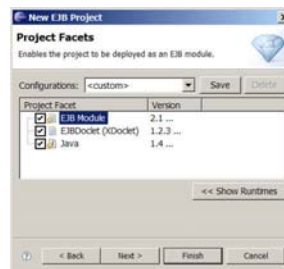
Judd Solutions



Create Projects



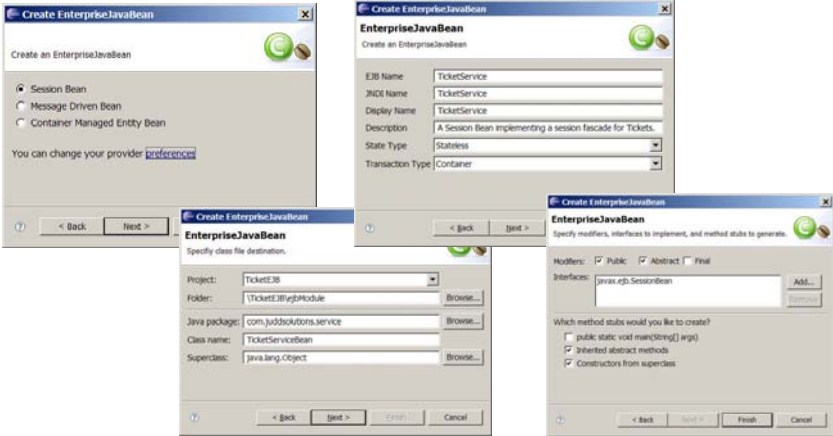
- New > Project > EJB > EJB Project
 - Create EJB, EJB Client and EAR Projects
 - Select Application Server



Judd Solutions

Create Enterprise JavaBean

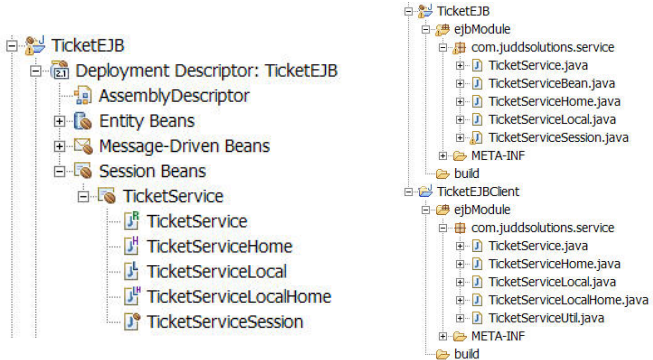
- New > Other > EJB > XDoclet Enterprise JavaBean



Judd Solutions

Enterprise JavaBean Wizard Output

- *Bean is the only wizard generated class



Judd Solutions



Enterprise JavaBean Source



```
package com.juddsolutions.service;

/**
 * <!-- begin-user-doc -->
 * A generated session bean
 * <!-- end-user-doc -->
 */
<!-- begin-xdoclet-definition -->
@ejb.bean name="TicketService"
description="A Session Bean implementing a session facade for Tickets."
display-name="TicketService"
jndi-name="TicketService"
type="Stateless"
transaction-type="Container"
<!-- end-xdoclet-definition -->
@generated
*/

public abstract class TicketServiceBean implements javax.ejb.SessionBean {

    /**
     * <!-- begin-xdoclet-definition -->
     * @ejb.interface-method view-type="remote"
     * <!-- end-xdoclet-definition -->
     * @generated
     */
    public String foo(String param) { return null; }
}
```

Judd Solutions



XDoclet Output



- Generates Home, Remote, EJB Deployment Descriptors, App Server DD and Util
 - Don't need to version control the generated classes
 - Don't modify the generated classes
- Changes to *Bean causes XDoclet to regenerate

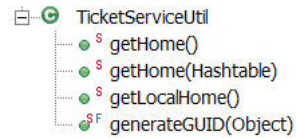
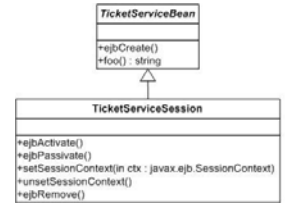
Judd Solutions



XDoclet Convention



- Bean class
 - Contains business methods
 - Session descendant implements EJB lifecycle methods
- Util class
 - Locator methods
 - GUID generation
- Local Home and Remote Home
 - Component Name
 - JNDI Name



Judd Solutions



XDoclet annotations



- Code Assist (ctrl + space)

```

/**
 * <!-- begin-xdoclet-definition -->
 * @ejb.interface-method view-type="both"
 * <!-- end-xdoclet-definition -->
 * @generated
 */
public String foo(String param) {
    return param + " " + new Date();
}
  
```

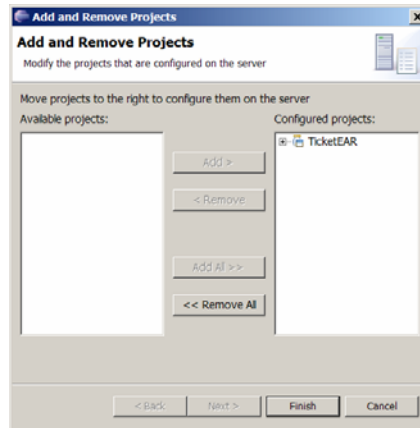
Judd Solutions



Deploy



- Right click on server and Add and Remove Projects



Judd Solutions



Agenda



- EJB Overview
- WTP Overview
- JST Overview
- Workspace Setup
- Session Bean
- Session Bean Client
- Packaging and Deployment
- Conclusion

Judd Solutions



Create Session Bean Client



1. Create Java project
2. Create client class
3. Add app server client jars
4. Create jndi.properties file
5. Run

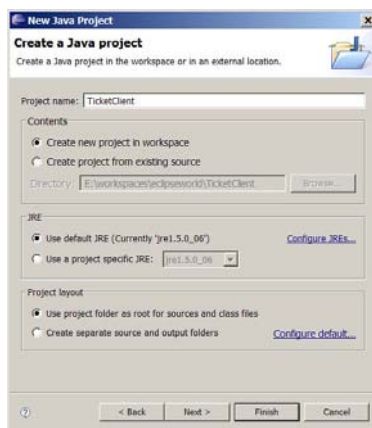
Judd Solutions



Create Java Project



- New > Project > Java > Java Project
- Add required *EJBClient project



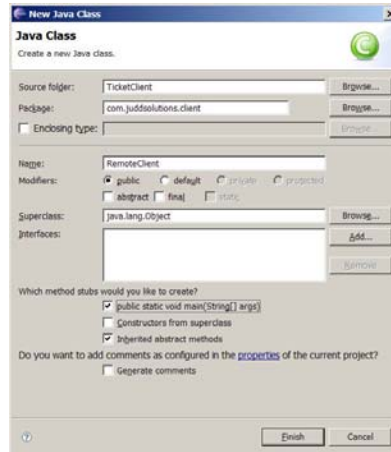
Judd Solutions



Create Client Class



- New > Class
- Add main method



Judd Solutions



Client Source



- Mostly boiler plate EJB client code

```
public class RemoteClient {  
  
    /**  
     * Main entry point to client  
     * @param args command line args  
     * @throws Exception any possible exception  
     */  
    public static void main(String[] args) throws Exception {  
        TicketServiceHome home = TicketServiceUtil.getHome();  
        TicketService service = home.create();  
        String result = service.foo("cool");  
        System.out.println(result);  
        System.out.println("\ndone");  
    }  
}
```

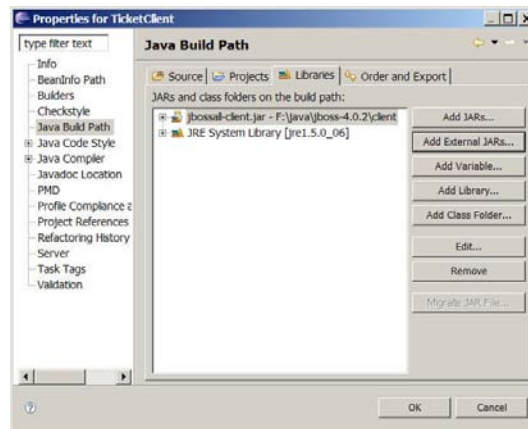
Judd Solutions



App Server Client jars



- Project > Properties > Java Build Path > Libraries



Judd Solutions



jndi.properties file



- New > File

```
# JBoss specific JNDI properties

java.naming.factory.initial=org.jnp.interfaces.NamingContextFactory
java.naming.provider.url=jnp://localhost:1099
java.naming.factory.url.pkgs=org.jboss.naming:org.jnp.interfaces
```

Judd Solutions



Agenda



- EJB Overview
- WTP Overview
- JST Overview
- Workspace Setup
- Session Bean
- Session Bean Client
- Packaging and Deployment
- Conclusion

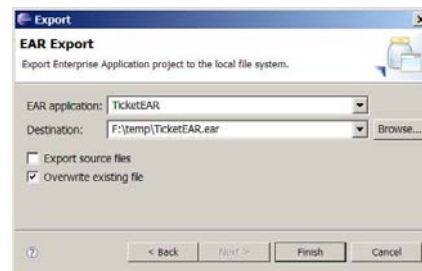
Judd Solutions



Packaging



- Export > J2EE > EAR file



Judd Solutions



Agenda



- EJB Overview
- WTP Overview
- JST Overview
- Workspace Setup
- Session Bean
- Session Bean Client
- Packaging and Deployment
- Conclusion

Judd Solutions



Conclusion



JST includes all the tools necessary for developing, deploying and testing Enterprise JavaBeans using XDoclet annotations as the mechanism for generating and keeping all the required EJB file up to date.

Judd Solutions



WTP Resources



- www.eclipse.org/webtools/
- www.projst.com
- Tutorials
 - <http://www.eclipse.org/webtools/community/communityresources.html#tutorials>
- Articles
 - <http://www.eclipse.org/webtools/community/communityresources.html#articles>
- New Group
 - <news://news.eclipse.org/eclipse.webtools>
- Dali
 - <http://www.eclipse.org/dali/>
- XDoclet
 - <http://xdoclet.sourceforge.net>

Judd Solutions



J2EE Resources



- www.javasoft.com
- www.theserverside.com
- J2EE 1.4 Specification
 - java.sun.com/j2ee/j2ee-1_4-fr-spec.pdf
 - java.sun.com/j2ee/1.4/docs/api/
- EJB 2.1 Specification
 - java.sun.com/products/ejb/docs.html

Judd Solutions



Contact Information



- <http://www.juddsolutions.com>
- cjudd@juddsolutions.com
- Blog
 - <http://blogs.apress.com/authors.php?author=Christopher%20Judd>
- Pro Eclipse JST
 - <http://www.projst.com>
 - <http://www.apress.com/book/bookDisplay.html?biD=447>
- Enterprise Java Development on a Budget
 - <http://www.apress.com/book/bookDisplay.html?biD=197>



Judd Solutions



Questions ?

Please fill out your evaluations.

Slides can be found at

<http://www.juddsolutions.com/ew2006/>

Judd Solutions